

# NEPTUNE - Bals

An Indo - German Joint Venture



## Industrial Plugs & Sockets

### Product Preview & Price List 2020

Price effective: August , 2020



# WHO WE ARE

Energy efficiency is one of the rising needs in the **urbanized world and many products are introduced** to fulfill this demand.

One of the crucial advantages that energy efficiency products bring is the reduction of cost. For implementing cost saving measures, industries are looking forward to products that will also help them in maintaining their position in the growing market.

A Leader in the Energy Saving, Power Quality & Power Distribution Management Sector of India, Neptune India set its foot in the market with a dedicated approach and a strong vision to become a specialist in the field of energy saving. Today, the company strives forth with its love for energy and has taken huge steps to implement best solutions in all aspects of energy.

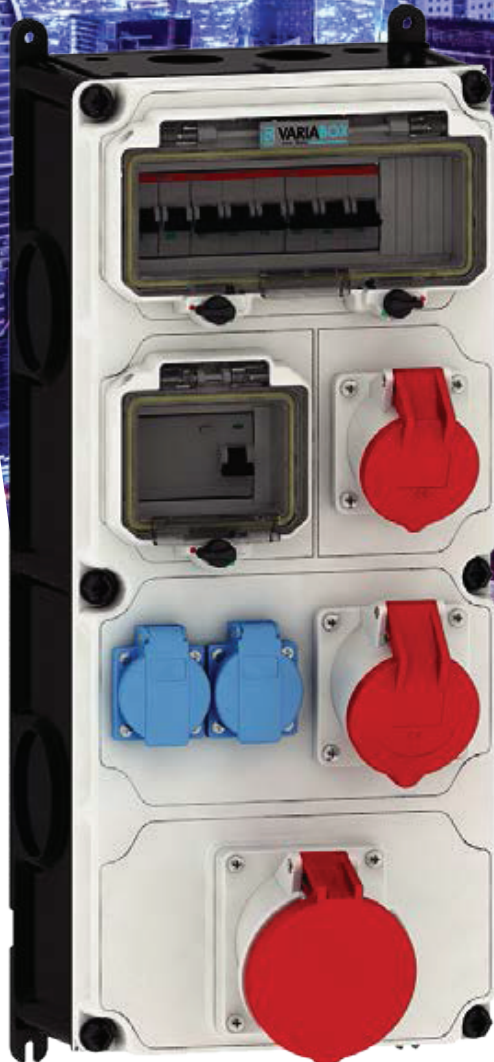
Established in the year 1989, Neptune India; with over 30,000 plus installations across the country and having a pan-India sales & support network. Neptune is a known brand in the Power Factor Correction, Energy Management, Harmonic Filtration & Power Distribution Products & Management.

## Our Business Units





# POWER DISTRIBUTION MANAGEMENT



Industrial  
Plugs & Sockets

# INDUSTRIAL PLUGS & SOCKETS HSN-8536

## SURFACE MOUNTING



Surface Mounting Socket



Surface Mounting Socket

Ampere	2P+⊥ 230V		3P+⊥ 415V		3P+N+⊥ 230/415V	
	Part No.	L.P. ₹	Part No.	L.P. ₹	Part No.	L.P. ₹
<b>SPLASH PROOF IP-44</b>						
16/20	111	<b>830</b>	11645	<b>910</b>	100	<b>910</b>
32	11651	<b>1,030</b>	11646	<b>1,110</b>	101	<b>1,110</b>
63	1104	<b>4,040</b>	1127	<b>4,100</b>	1124	<b>4,100</b>
<b>WATER TIGHT IP-67</b>						
16/20	1133	<b>1,380</b>	1137	<b>1,780</b>	1143	<b>1,780</b>
32	1145	<b>1,740</b>	1149	<b>2,150</b>	1155	<b>2,150</b>
63	1157	<b>5,300</b>	1161	<b>5,180</b>	1112	<b>5,180</b>
125	11427	<b>16,800</b>	11441	<b>18,400</b>	11447	<b>18,400</b>

## PANEL MOUNTING



Panel Mounting Socket



Panel Mounting Socket



Panel Mounting Socket



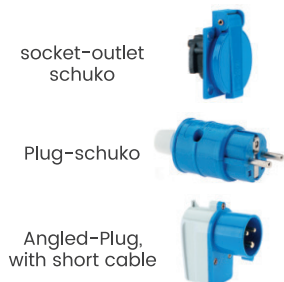
Panel Mounting Socket

Ampere	2P+⊥ 230V		3P+⊥ 415V		3P+N+⊥ 230/415V	
	Part No.	L.P. ₹	Part No.	L.P. ₹	Part No.	L.P. ₹
<b>SOCKET-OUTLET ANGLED SPLASH PROOF IP-44</b>						
16/20	1217	<b>510</b>	1221	<b>830</b>	12078	<b>830</b>
32	12310	<b>860</b>	1233	<b>1,020</b>	1215	<b>1,020</b>
63	12135	<b>3,560</b>	-	<b>3,640</b>	12380	<b>3,640</b>
<b>SOCKET-OUTLET STRAIGHT SPLASH PROOF IP-44</b>						
16/20	131	<b>510</b>	1324	<b>830</b>	132001	<b>830</b>
32	13007	<b>860</b>	13011	<b>1,020</b>	1333	<b>1,020</b>
63	1307	<b>3,560</b>	134	<b>3,640</b>	136	<b>3,640</b>
<b>SOCKET-OUTLET ANGLED WATER TIGHT IP-67</b>						
16/20	1266	<b>1,070</b>	1270	<b>1,170</b>	1276	<b>1,170</b>
32	1278	<b>1,340</b>	1282	<b>1,510</b>	1288	<b>1,510</b>
63	12001	<b>4,250</b>	1200	<b>3,990</b>	129	<b>3,990</b>
125	12100	<b>13,650</b>	12104	<b>13,700</b>	12108	<b>13,700</b>
<b>SOCKET-OUTLET STRAIGHT WATER TIGHT IP-67</b>						
16/20	1372	<b>1,070</b>	1376	<b>1,170</b>	1382	<b>1,170</b>
32	13024	<b>1,340</b>	13028	<b>1,510</b>	1370	<b>1,510</b>
63	1396	<b>4,250</b>	13100	<b>3,990</b>	13104	<b>3,990</b>
125	13452	<b>13,650</b>	13447	<b>13,700</b>	13451	<b>13,700</b>



# INDUSTRIAL PLUGS & SOCKETS HSN-8536

## PANEL MOUNTING



Ampere	2P+⏚ 230V		3P+⏚ 415V		3P+N+⏚ 230/415V	
	Part No.	L.P. ₹	Part No.	L.P. ₹	Part No.	L.P. ₹
<b>SPLASH PROOF IP-44</b>						
16/20	71094	<b>510</b>	-	-	-	-
16/20	7370	<b>450</b>	-	-	-	-
16/20	231	<b>650</b>	-	-	-	-

## PLUG



Ampere	2P+⏚ 230V		3P+⏚ 415V		3P+N+⏚ 230/415V	
	Part No.	L.P. ₹	Part No.	L.P. ₹	Part No.	L.P. ₹
<b>SPLASH PROOF IP-44</b>						
16/20	21001	<b>430</b>	21005	<b>580</b>	203	<b>580</b>
32	21013	<b>710</b>	21017	<b>830</b>	204	<b>830</b>
63	2104	<b>3,670</b>	2151	<b>3,360</b>	21590	<b>3,360</b>
<b>WATER TIGHT IP-67</b>						
16/20	210576	<b>940</b>	21349	<b>1,280</b>	21239	<b>1,280</b>
32	210594	<b>1,450</b>	21351	<b>1,540</b>	210607	<b>1,540</b>
63	2181	<b>4,250</b>	2185	<b>3,920</b>	2189	<b>3,920</b>
125	2191	<b>12,500</b>	2195	<b>12,300</b>	2199	<b>12,300</b>
<b>SPLASH PROOF IP-44</b>						
16/20	31001	<b>640</b>	31005	<b>760</b>	303	<b>760</b>
32	31013	<b>830</b>	31017	<b>1,040</b>	304	<b>1,040</b>
63	3104	<b>4,320</b>	3151	<b>4,390</b>	3112	<b>4,390</b>
<b>WATER TIGHT IP-67</b>						
16/20	310333	<b>1,370</b>	31241	<b>1,650</b>	31243	<b>1,650</b>
32	31244	<b>1,890</b>	31245	<b>2,100</b>	310364	<b>2,100</b>
63	3181	<b>4,680</b>	3185	<b>4,480</b>	3124	<b>4,480</b>
125	3191	<b>14,400</b>	3195	<b>14,640</b>	3199	<b>14,640</b>

# INDUSTRIAL PLUGS & SOCKETS HSN-8536

## SURFACE MOUNTING



Socket-outlet with MCB Provision



Socket-outlet interlocked

Ampere	2P+⊥ 230V		3P+⊥ 415V		3P+N+⊥ 230/415V	
	Part No.	L.P. ₹	Part No.	L.P. ₹	Part No.	L.P. ₹
<b>SPLASH PROOF IP-44</b>						
16/20	15019	<b>5,440</b>	-	<b>6,000</b>	15059	<b>6,000</b>
32	15030	<b>6,120</b>	-	<b>7,100</b>	1585	<b>7,100</b>
63	-	-	-	<b>14,600</b>	15036	<b>14,600</b>
<b>WATER TIGHT IP-67</b>						
16/20	15024	<b>5,540</b>	15098	<b>6,200</b>	15028	<b>6,200</b>
32	15352	<b>6,220</b>	15111	<b>7,370</b>	15112	<b>7,370</b>
63	-	-	15000	<b>14,820</b>	15001	<b>14,820</b>
125	-	-	15158	<b>44,960</b>	15160	<b>44,960</b>
<b>SPLASH PROOF IP-44</b>						
16/20	1619	<b>7,150</b>	1610	<b>10,250</b>	1611	<b>10,250</b>
32	16097	<b>9,490</b>	16596	<b>11,490</b>	16043	<b>11,490</b>
63	-	-	16605	<b>21,800</b>	16603	<b>21,800</b>
<b>WATER TIGHT IP-67</b>						
16/20	1600	<b>7,150</b>	1602	<b>10,340</b>	1604	<b>10,340</b>
32	16104	<b>9,990</b>	160178	<b>12,430</b>	160177	<b>12,430</b>
63	-	-	16604	<b>23,210</b>	16602	<b>23,210</b>
125	-	-	16621	<b>76,000</b>	16622	<b>76,000</b>

## DOMESTIC AC/ INDUSTRIAL OUTLET

Plug/Socket combined in metal enclosure



Plug/Socket combined in Polycarbonate enclosure



Appliance Inlet



Ampere	2P+⊥ 230V		3P+⊥ 415V		3P+N+⊥ 230/415V	
	Part No.	L.P. ₹	Part No.	L.P. ₹	Part No.	L.P. ₹
<b>SPLASH PROOF IP-44</b>						
16/20	1201 SP/DP	<b>1,510/1,520</b>	-	<b>2,160</b>	3201	<b>2,160</b>
32	1202 SP/DP	<b>2,090</b>	-	<b>2,450</b>	3202	<b>2,720</b>
63	1203	<b>8,740</b>	-	<b>8,580</b>	3203	<b>8,580</b>
<b>PLUG SOCKET COMBINED IN POLYCARBONATE</b>						
16/20	901	<b>1,780</b>	-	<b>2,530</b>	903	<b>2,530</b>
32	911	<b>2,420</b>	-	<b>2,990</b>	913	<b>2,990</b>
<b>SPLASH PROOF IP-44</b>						
16/20	261	<b>1,250</b>	-	<b>1,310</b>	2612	<b>1,310</b>
32	2662	<b>1,860</b>	-	<b>2,550</b>	2600	<b>2,550</b>



## VARIABOX The new generation of distributors HSN-8537

The new VARIABOX from Bals meets all requirements for a modern distributor housing and can be individually configured in 5 different sizes with versions S, M, L, & XXL as surface mounting or mobile combination. We have the right distributor for every user. Configuration according to individual specifications on the basis of pre-defined, encoded flanges, which offer a maximum level of safety during the initial installation & /or maintenance. With their robust design in a high grade & durable, quality plastic, their good seal, the modular expansion option & many Innovative extra features, the new VARIABOX proves itself even under the most adverse conditions.



## Features

- > Ready wired for installation
- > Housing made of high-grade, impact-resistant plastic
- > Top and bottom can be sealed together
- > Permanently attached cover screws
- > All CEE socket outlets with screw less, maintenance-free QUICK-CONNECT connection technology
- > Colors, bottom-black, top-electro grey (Housing top optionally available in the colors yellow, red, blue or silver)
- > With high quality handle
- > Coded flange system for maximum safety during initial installation and maintenance
- > Fuse elements arranged below transparent, lockable operating window with user friendly OTC mechanics (one touch close)

Item Code	Dimensions	L.P. ₹
Variabox-Small	130 x 230 mm	<b>8,550/-</b>
Variabox-Medium	260 x 230 mm	<b>10,350/-</b>
Variabox-Large	390 x 230 mm	<b>13,950/-</b>
Variabox-Extra Large	520 x 230 mm	<b>17,550/-</b>
10 Way Window	-	<b>1,620/-</b>
4 Way Window	-	<b>1,575/-</b>

## ECO BOX ENCLOSURE & JUNCTION BOXES HSN-8538

### Modular Distribution Board – IP 65



Modular Distribution Board



Modular Enclosure



Junction Boxes

Dimensions LxWxH (mm)	Part No.	L.P. ₹
<b>MODULAR DISTRIBUTION BOARDS</b>		
150 x 300 x 210	9150	<b>2,550/-</b>
300 x 300 x 210	9300	<b>3,250/-</b>
450 x 300 x 210	9450	<b>4,890/-</b>
600 x 300 x 210	9600	<b>6,230/-</b>
<b>MODULAR ENCLOSURE</b>		
180 x 180 x 135	6180	<b>1,380/-</b>
180 x 240 x 135	6260	<b>1,620/-</b>
240 x 320 x 135	6320	<b>2,940/-</b>
320 x 420 x 135	6420	<b>4,050/-</b>
420 x 640 x 160	6520	<b>8,910/-</b>
<b>JUNCTION BOXES</b>		
90 x 90 x 50	1001	<b>300/-</b>
100 x 100 x 60	1002	<b>350/-</b>
110 x 140 x 70	1003	<b>600/-</b>
130 x 130 x 100	1004	<b>720/-</b>
130 x 170 x 80	1005	<b>790/-</b>
170 x 210 x 100	1006	<b>1550/-</b>

## DESCRIPTION

### Modular Enclosure

- > Impact resistant modular polycarbonate distribution boards
- > Chemical resistant
- > Solid and Stable
- > Self-extinguishing
- > Weather Resistant
- > Corrosion free screws

### Eco Box Modular Distribution Boards

- > Impact resistant modular polycarbonate enclosures
- > Chemical resistant
- > Solid and stable
- > Self-extinguishing
- > Weather resistant
- > Corrosion free screws
- > Self internal fixing center / fixing center outside
- > Cable entry to client's specifications



**Mobile Distribution Rubber Boards HSN-8537**



**Customized IP 65 L.V. Distribution Panels & Feeder Pillar HSN-8537**



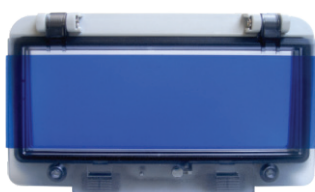
**Enclosures HSN-8538 IP-65**



Part No.	Rating	LxWxH (mm)	L.P. ₹
3004	4 Way	160 x 225 x 100	1,490/-
3008	8 Way	225 x 225 x 100	2,350/-
3304	12 Way	300 x 225 x 100	3,290/-
3308	24 Way	300 x 400 x 100	5,900/-
3312	36 Way	300 x 600x 100	8,700/-

Rubber distribution & IP 65 L.V. Distribution Panel- Price as per specification on request

**Windows HSN-8538**



No. of ways	Part No.	L.P. ₹
2 Way	5882	570/-
4 Way	5891	590/-
8 Way	58010	760/-
12 Way	58019	910/-

# Terms & Conditions

## Price Basis:

The prices mentioned are Unit Price and Ex-Works basis.  
Prices shall be applicable as per our Price List ruling at the time of despatch.

## Place of despatch:

The materials shall be despatched from Noida / Delhi works.

## GST :

Goods & Service Tax shall be charged extra as applicable at the time of despatch.

## Insurance:

Insurance shall be organized, paid, dealt by the customer directly. Damages or any shortages, if found shall be dealt by the customer directly.

## Forwarding & Freight Charges:

For all standard items, freight shall be charged extra @3%.

## Terms of Payments:

For all authorized Business Partners, payment terms shall be applicable as per the Trade Policy except APFC Panels & other Panels.

In case of Panels, advance payment & balance along with 100% taxes & duties levies etc. shall be released against PI before despatch.

**NOTE:** This Price List supersedes all previous Price Lists.

## Regional Contacts

### Ahmedabad

ahmedabad@neptuneindia.com

### Bengaluru

bangalore@neptuneindia.com

### Bhopal

bhopal@neptuneindia.com

### Chennai

chennai@neptuneindia.com

### Chandigarh

Chandigarh@neptuneindia.com

### Coimbatore

coimbatore@neptuneindia.com

### Haryana

haryana@neptuneindia.com

### Hyderabad

hyderabad@neptuneindia.com

### Indore

indore@neptuneindia.com

### Jaipur

jaipur@neptuneindia.com

### Kanpur

kanpur@neptuneindia.com

### Kolkata

kolkata@neptuneindia.com

### Ludhiana

ludhiana@neptuneindia.com

### Mumbai

mumbai@neptuneindia.com

### Nagpur

nagpur@neptuneindia.com

### Pune

pune@neptuneindia.com

### Raipur

raipur@neptuneindia.com

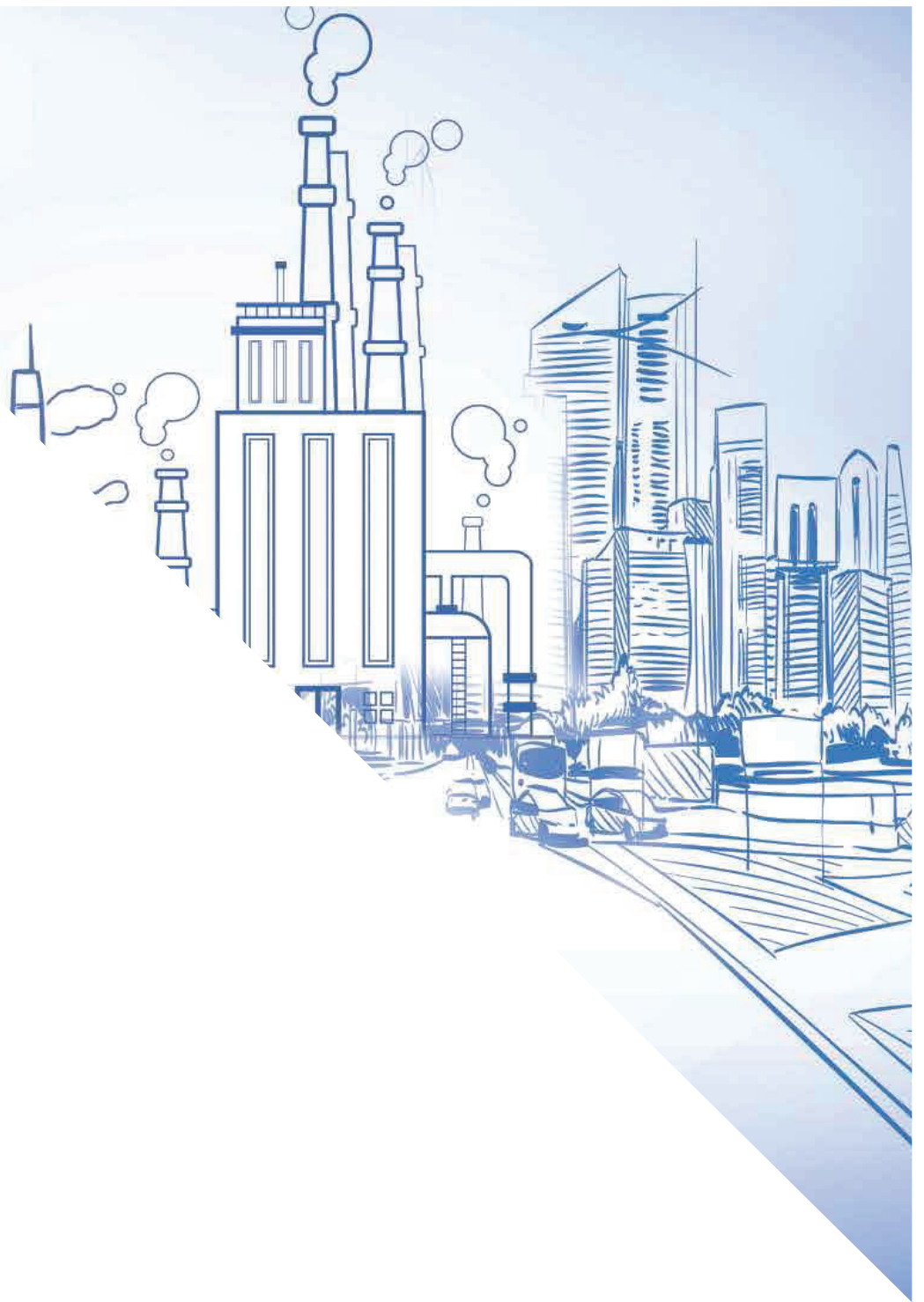
### Uttaranchal

uttaranchal@neptuneindia.com

### Vadodara

baroda@neptuneindia.com





## Neptune India Ltd.

---

A 11 - Sector 59, Noida - 201301, INDIA  
Tel: 0120 420 5900, 429 7900  
For Product enquiry: + 91 955 550 0300  
Email: [enquiry@neptuneindia.com](mailto:enquiry@neptuneindia.com)  
[www.neptuneindia.com](http://www.neptuneindia.com)



## Bals Elektrotechnik GmbH

---

Hauptverwaltung Werk I Burgweg 22 D - 57399  
Albaum Kirchhudem Germany  
Email: [info@bals.com](mailto:info@bals.com)  
[www.bals.com](http://www.bals.com)

