



Control the fire Intime

[www.intimefire.com](http://www.intimefire.com)

## COMPANY OVERVIEW

**INTIME** is one of the leading manufactures of **Fire Fighting Appliances & Systems**, in India. We manufacture the complete range of '**INTIME**' Brand Fire Extinguishers, its spares and refills, and all its Ancillaries & Accessories along with Designing and Integration of all types of Fixed Fire Fighting & Fire Suppression Systems.

Our Company has been implementing ISO-9000 Quality Management System **since 1999**.

### PRODUCTS & SERVICES

- ✓ All types of Extinguishers, Fire Fighting and Fire Suppression Systems & Allied Fittings.
- ✓ Design, Assembly, Installation and Servicing of Gas & Fixed Fire Fighting Systems.
- ✓ Various accessories required for Manufacturing Fire Extinguishers.
- ✓ Various Manufacturing & testing Equipments for Fire Extinguishers.
- ✓ Plastic Cabinets for Fire Fighting Equipment.
- ✓ All Types of Fire Hydrant and Sprinkler Fittings and Equipment.
- ✓ Fire Detection Systems.
- ✓ Medical First Aid Kits.
- ✓ AMC for Fire Extinguisher & Fixed Fire Fighting Systems.
- ✓ Hydro Testing, Refilling, Painting of Fire Extinguishers and Non Toxic Gas Cylinders (CO<sub>2</sub>, Halon, HFC, Air, Nitrogen etc.)
- ✓ Kitchen and Galley Fire Protection Systems.
- ✓ UL Approved Clean Agents.
- ✓ Coltraco Ultrasonic Equipment.



PETROLEUM AND EXPLOSIVES  
SAFETY ORGANISATION



BUREAU OF INDIAN  
STANDARDS



NATIONAL SMALL  
INDUSTRIES CORPORATION



MICRO, SMALL &  
MEDIUM ENTERPRISES



AMERICAN BUREAU  
OF SHIPPING



MARINE EXPLOSIVE  
DIRECTIVE



RINA  
ISO 9001:2015



CE 1128 / E N 3



INDIAN REGISTER  
OF SHIPPING



ENGINEERS INDIA  
LIMITED



BHARAT HEAVY  
ELECTRICALS LTD.



UNDERWRITERS  
LABORATORIES.

## MANUFACTURING FACILITY

Our Fire Extinguisher Manufacturing Unit Comprises of Press, Welding Shop, Machining Shop, Hydro Testing Shop, Painting Shop, Anti Corrosion Treatment Shop, Hot Phosphating, Gas & Powder filling section, Inspection, Testing department, laboratory, Marketing & Packing Section.

We have a fully Certified and Equiped Gas Transfer Station along with Hydro - testing facilities.

Today **INTIME** has an impressive list of clientele, from practically every field viz. Shipping, Shipbuilding, Offshore, Refineries, Petrochemical, Generation, Steel, Fertilizer, Defense Services, Airports, Port Trusts, Banks, etc.





## CLEAN AGENT TYPE



### Best Usage for

Computer, Telephone, Switchgears,  
Sensitive data storage, Offices, Boats,  
Aircraft's, Laboratories, etc.



Class A



Class B



Class C



Electrical

Model No.	CA2	CA4	CA6
Capacity(Kgs)	2	4	6
Type	Stored Pressure	Stored Pressure	Stored Pressure
Extinguishing Agent	UL Approved HFC236fa	UL Approved HFC236fa	UL Approved HFC236fa
Fire Rating as per Is15683	8B	1A,13B	1A,21B
Average Discharge Time (S)	>8	>12	>16
Propellant	Nitrogen	Nitrogen	Nitrogen
OD(mm)	108	140	160
Filled Weight (Kg)	4	7.1	10
Design Standard	CE/EN3/IS15683	CE/EN3/IS15683	CE/EN3/IS15683

## WATER TYPE

### Best Usage for

School, Theaters, Apartments and  
Office, Dry goods store

Water extinguisher are not suitable  
for fires involving electrical risk.  
Don't use on Electrical Fire.



Class A



Model No.	STW6	STW9	CW6	CW9
Capacity( Ltr. )	6	9	6	9
Type	Stored Pressure	Stored Pressure	Cartridge	Cartridge
Extinguishing Agent	Water	Water	Water	Water
Fire Rating as per Is15683	2A	3A	2A	3A
Average Discharge Time (S)	>25	>30	>25	>30
OD(mm)	160	180	160	180
Filled Weight (Kg)	9.4	13	11	15
Design Standard	CE/EN3/IS15683	CE/EN3/IS15683	CE/EN3/IS15683	CE/EN3/IS15683

## MECHANICAL FOAM TYPE

### Best Usage for

Petrol Station, Restaurant, etc.  
Foam extinguishers are not suitable  
for fires involving electrical risk  
don't use on Electrical Fire.



Class A



Class B



Model No.	STMF6	STMF9	CMF6	CMF9
Capacity ( Ltr.)	6	9	6	9
Type	Stored Pressure	Stored Pressure	Cartridge	Cartridge
Extinguishing Agent	Foam,AFFF	Foam,AFFF	Foam,AFFF	Foam,AFFF
Fire Rating as per Is15683	2A, 21B	4A, 34B	2A, 21B	4A, 55B
Average Discharge Time (S)	>25	>30	>25	>30
OD(mm)	160	180	160	180
Filled Weight (Kg)	9.5	13	11	15
Design Standard	CE/EN3/IS15683	CE/EN3/IS15683	CE/EN3/IS15683	CE/EN3/IS15683



## CARBON DIOXIDE TYPE

### Best Usage for

Chemical Manufacturing Plant, Oil Rings,  
Rail Yard, Warehouses, Construction sites,  
Parking, Garages, Airports, Electrical  
substation and Large laboratories.



Class B



Class C



Electrical

Model No.	CDO2	CDO3	CDO4.5	CDOA2	CDOA4.5
Capacity (Kgs)	2	3	4.5	2	4.5
Type	Stored Pressure	Stored Pressure	Stored Pressure	Stored Pressure	Stored Pressure
Extinguishing Agent	Carbon Dioxide	Carbon Dioxide	Carbon Dioxide	Carbon Dioxide	Carbon Dioxide
Fire Rating as per Is15683	8B	13B	21B	13B	55B
Average Discharge Time (S)	>8	>10	>15	>8	>15
Propellant	Carbon Dioxide	Carbon Dioxide	Carbon Dioxide	Carbon Dioxide	Carbon Dioxide
OD(mm)	108	140	140	108	140
Filled Weight (Kg)	9	12	16.5	6.2	11.85
Design Standard	CE/EN3/IS15683	CE/EN3/IS15683	CE/EN3/IS15683	CE/EN3/IS15683	CE/EN3/IS15683

## CEILING MOUNTED MODULAR TYPE

Modular type ABC clean agent gas and ABC Dry automatic fire extinguisher which keep guard and extinguishes fire quickly and efficiently especially in close places where fire could cause extensive if no detected and extinguished in time

### IDEAL USE

Protection of computer area, ATM Center, server room, Fuel and flammable liquid storage, oil fill-in stations, transformers, automobile garages, marine engines, paint and varnish booths, welding benches, domestic gas Storage `s particularly for hotels etc.

### FEATURES

- Hazard free clean agent article safe and intact in case of fire
- Provides concentrated fire protection for vital equipment
- Highly cost effective compared to automatic fixed fire protection system
- It is a portable unit, easy to install and re-locate
- Imported pressure guage fitted for instant verification of functionality and reliability of every unit
- Automatic and reliable security round the clock
- Provides security in case of emergencies and power failure without power backup rechargeable and easy to service
- Available with Clean Agent Gas & Powder ( on request )

### PERFORMANCE DATA :

Sizes	Propellent	Working Pressure	Testing Pressure	Area Protection	Volume Protection	Vertical Height	Operation Time in Seconds	Agent
2 kgs	Nitrogen	7 to 15 kgs / cm <sup>2</sup>	35 kgs / cm <sup>2</sup>	1 to 1.5m <sup>2</sup>	3m <sup>3</sup>	1.m to 3m	8-10	Powder/Clean Agent
5 kgs	Nitrogen	7 to 15 kgs / cm <sup>2</sup>	35 kgs / cm <sup>2</sup>	3.5 to 4m <sup>2</sup>	8m <sup>3</sup>	1.m to 3m	10-15	Powder/Clean Agent
10 kgs	Nitrogen	7 to 15 kgs / cm <sup>2</sup>	35 kgs / cm <sup>2</sup>	7 to 8m <sup>2</sup>	10m <sup>3</sup>	1.m to 3m	15-20	Powder/Clean Agent
15 kgs	Nitrogen	7 to 15 kgs / cm <sup>2</sup>	35 kgs / cm <sup>2</sup>	8 to 10m <sup>2</sup>	20m <sup>3</sup>	1.m to 3m	18-23	Powder/Clean Agent



## METAL FIRE TYPE

Ref Standard IS 11833  
Intime Brand 5/10 Kg TEC Type Fire Extinguishers Consists of :

Body	( IS 513 ) Welded cylinders hydraulic tested up to 35 kg/cm <sup>2</sup> duly hot phosphate & epoxy powder coated – internal and external – more than 65 microns.
Cap	Leaded Tin Bronze IS: 318 .
Syphon	Made of MS IS:3601
Piercer	Stainless Steel IS : 6528
Gas Cartridge	Confirming to IS : 4947
Discharge Hose	Braided Rubber dia 12.5mm. min Length 1000 mm. min Bursting Pressure 50 kg/cm <sup>2</sup>
Agent	TEC POWDER (Class D)
Performance Details	1)Discharge Time : Less than 30 sec. 2) Discharge Test : More than 85 % of total powder
Dome type Nozzle	Aluminum Nozzle with Aluminum Pipe Applicator of 1m.
Wheel	Rubber wheel of 152x38 mm
Also Available in Stored Pressure Model	



# TROLLEY MOUNTED DRY CHEMICAL POWDER TYPE

 IS 16018



## TECHNICAL SPECIFICATION

Capacity	- 25, 50 & 75 kg.
Construction	- Carbon Dioxide Cylinder bearing IS : 7285 & brass forge Valve IS : 3224.
Charge	- Co2 confirming to IS : 15222
Finish	- Painted in Synthetic Enamel P.O. Red
Accessories	- Trolley for 25, 50 & 75 kgs.
Operation	- Keep INTIME Extinguisher upright and hold in hand firmly. Removed safety pin and turn the wheel anti-clockwise. Direct discharge at base of the flames.
Maintenance	- Strictly as per IS : 2190 for satisfactory performance
Approval	- Approved and certified by BIS & CE

Fire Extinguisher Capacity	25 kgs.	50 kgs.	75 kgs.
Minimum Period for which Throw of Jet Maintained	30 Sec.	47 Sec.	58 Sec.
Minimum Period to Discharge Atleast 90% of Contents	80 Sec.	180 Sec.	220 Sec.
Range of jet	6 mtr.	8 mtr.	10 mtr.
Fire Rating	NA	NA	NA
Working Pressure	15 Kg/cm <sup>2</sup>	15 Kg/cm <sup>2</sup>	15 Kg/cm <sup>2</sup>
Hydro Pressure	30 Kg/cm <sup>2</sup>	30 Kg/cm <sup>2</sup>	30 Kg/cm <sup>2</sup>

## KITCHEN FIRE EXTINGUISHER

Class K Fires are fires that involve cooking oils, grease or animal for and can be extinguished using Wet Chemical, the typical agent found in kitchen fire extinguisher.

**Available Capacity** : 1kg, 2kg, 4kg, 6kg, & 9kg.

**Suitable For** : Kitchen Fire. (Vegetable/Animal Oil & Fat Fire)

**Ideal Usage** : Kitchen Fire.

### FEATURES

- ▶ Simple Operation and Maintenance
- ▶ Wide Angle, Soft Discharge Spray Pattern
- ▶ Natural Polished Stainless Steel Body
- ▶ Easily Rechargeable

### Specification

Available Capacity	: 1kg, 2kg, 4kg, 6kg, & 9kg.
Working Temperature	: +5°C to +55°C
Cylinder Testing Pressure	: 30 Bar
Service Pressure	: 15 Bar
Filling Tolerance	: 0,(-)5% by Volume
Minimum Effective Discharge Time	: 8 Seconds (Minimum)
Discharge Quality	: More than 90%

### Available Capacity

### CHEMICAL CHARGE

Charge : 'Orchidee' Additive Make in Europe

Propellant : Nitrogen

### SUITABILITY

Class of fire : Class K (Vegetable / Animal Oil / Fat Fire)





## TROLLEY MOUNTED CARBON DIOXIDE TYPE

 IS 16018



### TECHNICAL SPECIFICATION

Capacity	- 6.5, 9 & 22.5 kgs.
Construction	- Cylinder bearing IS : 7285 & brass forge valve IS : 3224.
Charge	- Co2 confirming to IS : 15222 & filled with liquified Co2 Gas filling ration $\leq 0.667$
Finish	- Painted in Synthetic Enamel P.O. Red
Accessories	- Trolley for 6.5, 9 & 22.5 kgs.
Operation	- Keep INTIME Extinguisher upright and hold in hand firmly. Removed safety pin and turn the wheel anti-clockwise. Direct discharge at base of the flames.
Maintenance	- Strictly as per IS : 2190 for satisfactory performance
Approval	- Approved and certified by BIS & PESO

Fire Extinguisher Capacity (kgs.)	6.5	9	22.5
Minimum Period for which Throw of Jet Maintained	10 sec	15 sec	20 sec
Minimum Period to Discharge Atleast 90% of Contests	20 sec	36 sec	60 sec
Range of jet	1 mtr.	2 mtr.	5 mtr.
Full Wt. ( Approx )	25 kg.	35 kg.	76 kg.
Fire Rating	55 B	70 B	89 B
Working Pressure	60 kgf/cm <sup>2</sup>	60 kgf/cm <sup>2</sup>	60 kgf/cm <sup>2</sup>
Hydro Pressure	250 kgf/cm <sup>2</sup>	250 kgf/cm <sup>2</sup>	250 kgf/cm <sup>2</sup>

## TROLLEY MOUNTED MECHANICAL FOAM / WATER TYPE

 IS 16018



Fire Extinguisher Capacity	45 ltr.
Minimum Period for which Throw of Jet Maintained	40 sec
Minimum Period to Discharge Atleast 90% of Contests	180 sec
Range of jet	10 mtr.
Empty. Wt. ( Approx )	35 kg.
Full Wt. ( Approx )	80 kg.
Working Pressure	15 kgf/cm <sup>2</sup>
Hydro Pressure	30 kgf/cm <sup>2</sup>

## WATER / FOAM MONITOR

- Ideal for Fixed Installation
- Made out of Carbon Steel heavy duty seamless pipe, hot dip galvanized for Corrosion Resistance
- Design that ensures ease of operation and maintenance
- Vertical and Horizontal movement is due to Gunmetal or optional Stainless Steel Swivel Joints with Ball Bearing. Tiller Bar fixed on the Barrel is used to move the Monitor to desired position and then threaded Locks are tightened to secure the monitor at a desired horizontal and vertical position
- For Monitors with Higher Flows, Horizontal and Vertical Movement is made with the Self Locking type enclosed Geared Swivel Joints with Worm and Worm Gear using Hand Wheel that ensures smooth and easy movement during ongoing operation of Monitor.
- Monitor is capable of Horizontal Rotation of 360 Degrees and Vertical Traverse of + 90 Degrees to -45 Degrees
- Flanged Inlet – Dimensions as per Requirement
- Available with variety of Nozzles – Solid Bore Jet Nozzle, Hollow Jet-Fog Nozzle, Self-Aspirating and Self Inducting Foam Barrel and Self Inducting Aqua Foam Nozzle
- Nozzle Material of Construction is available in Aluminum Alloy, Stainless Steel and Gunmetal
- Trolley Mounting with Inlets containing Non-Return Valve Optional



## MOBILE FOAM TROLLEY

- |   |                                    |
|---|------------------------------------|
| ▪ Foam Tank Body                        | - FRP Body                         |
| ▪ Foam Tank Capacity                    | - 100 Itr.                         |
| ▪ Foam Filling Inlet                    | - 2" BSP with car Top of the Tank  |
| ▪ Pickup Tube Inlet                     | - 1" BSP Top of the Tank           |
| ▪ Mounting Bracket of Inductor & Nozzle | - Fixed upon the Tank              |
| ▪ Inductor Body                         | - Aluminium LM6                    |
| ▪ Inductor Capacity                     | - 225 LPM.                         |
| ▪ Foam Suction                          | - 0 to 1%, 3%, 6%. From Regulator. |
| ▪ Inductor Inlet                        | - 2 1/2" Male Instantaneous.       |
| ▪ Inductor Outlet                       | - 2 1/2" female Instantaneous.     |
| ▪ Foam Nozzle                           | - Aluminium alloy painted.         |

## ALUMINIUM CARBON DIOXIDE TYPE



- Tested up to 1.5 Times of Service Pressure ( 350 Bar Test Pressure )



- IS 15683 Approved



- Highest fire rating 55B & 13B



lightweight

- 35% Lighter than conventional **steel**



- Corrosion resistant Aluminum **6061 Alloy**



- Easy to operate mechanism



- Eco friendly extinguisher CO<sub>2</sub>



# PLASTIC CABINETS

## TECHNICAL FEATURES

Material: Polypropylene, nylon, Polycarbonate

Production Process: Injection Moulding

### COMPONENTS

- EPDM seal
- Double handle in nylon
- Inspection windows in Polycarbonate
- Resin label

Dimensions (mm): 616x735x270

Internal Dimensions (mm): 520x675x238

Weight (kg): 7.20

Ring Diameter (mm): 150/170 and 170/190

### OPTIONALS

- Clamping rings in nylon and clamping springs in PVC
- Cylinder lock
- Horizontal shelves

Quantity per pallet (n°): 18

Pallets dimensions (cm): 128x75x265

Pallet Weight (kg): 145

## PRODUCT FEATURES

1. Body and lid with reinforced structure
2. Inspection windows with "OR" seal
3. EPDM seal ( against dust and water ingress )
4. Extinguisher holding kit with bayonet cap composed of PVC clamping spring with 4 holes and clamping ring in Nylon available in tow sizes.
5. Reinforced fixing points.
6. Double ergonomic handle in Nylon.
7. Customized logo.
8. Available disassembled and stacked.
9. Optional cylinder lock
10. Optional key compartment integrated into the lid. ( supplied with two keys )



## FIRE EXTINGUISHER CABINET 9kg. AND 12kg.

### TECHNICAL FEATURES

Material: Polypropylene, nylon

Production Process: Injection Molding

### COMPONENTS

- Label in PVC
- Inspection window in polycarbonate
- Nylon clamping ring with PVC spring

Dimensions (mm): 715x335x240

Internal Dimensions (mm): 645x244x204

Weight (kg): 2.7

Ring Diameter (mm): 170/190

Dimensions (mm): 865x335x240

Internal Dimensions (mm): 795x244x204

Weight (kg): 3,2

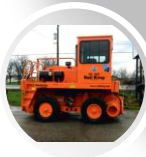
## PRODUCT FEATURES

1. Double ergonomic handles in the lid, with klik-system anti-vibration for security in the everyday use.
2. The inspection window allows the view of the fire extinguisher. the "OR" seal guarantees a better water-resistance.
3. Lockable against burglary or mishandling with a common padlock or with seal.
4. Labyrinth system against water ingress. Even without seal is it guaranteed against dust and water ingress
5. Extinguisher holding kit composed of: PVC clamping spring with 4 holes, and Nylon clamping ring available in tow sizes.
6. Bayonet cap for clamping ring, with reinforced fixing points easy to assemble without any tools.



# FIRE LHS TUBE SYSTEMS

## Heavy Equipment



▪ Crawler Tractors



▪ Loaders



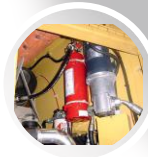
▪ Excavators



▪ Cranes



▪ Lrail Stackers



▪ Mobile Life Equipment

- SELF-CONTAINED AUTOMATIC FIRE DETECTION & SUPPRESSION SYSTEM
- PNEUMATIC LINEAR HEAT / FLAME DETECTION SYSTEM
- PINPOINT HEAT DETECTION & LOCAL APPLICATION SUPPRESSION SYSTEM
- TOTAL FLOOR SYSTEM FOR "MICRO-ENVIRONMENTS"



### INDIRECT LOW PRESSURE SYSTEM

Tubing ruptures creating pressure drop which releases suppressant faster through separate piping network!



### DIRECT LOW (DLP) PRESSURE SYSTEM

The Fire FINDER Tubing is both a flame/heat detector and discharge nozzle rupturing a 400° F or flame impingement

OUR LHS TUBE IS UL MARKED

## STAND ALONE SMOKE DETECTOR

**TUV EN 14604 Approval**  
**VdS 3131 Pending**

**10-Year Sealed Lithium Battery Power**  
**Smoke Detector Fire Alarm**

- Worry-free 10 - Year battery life
- Advanced photoelectric sensing technology offers high sensitivity
- Auto-check malfunction, low battery warning
- Manual test & auto-reset

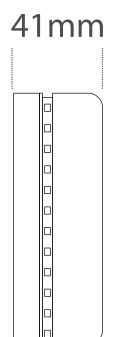
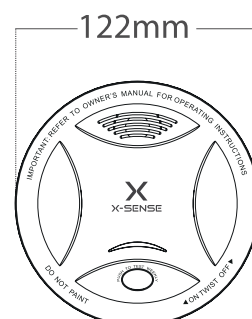


### Specifications

Sensor Type	Photoelectric
Alarm Sound	>85dB (3m)
Power Supply	3V lithium battery (included)
Power Supply Life	10 years
Alarm Current	≤30mA
Standby Current	≤6μA
Working Temperature	-10 °C ~ + 50 °C
Working Humidity	≤93% RH
Weight	240g

### Dimension

φ122 x 41(H) mm



# Kitchen Hood Fire Suppression System

Suppresses the fire using proven fire suppressant agents



## Nozzles

Liquid agent stored under pressure when activated is transmitted through supply lines and discharged through nozzles

## Mechanical release module (MRM)

Accomplished when a fusible link separates in a fire condition and releases tension on the cable causing a spring-loaded trigger to activate the cylinder discharge valve



## Fire Extinguishing Agent

a special formulated potassium compound for use in fats and cooking oil fires



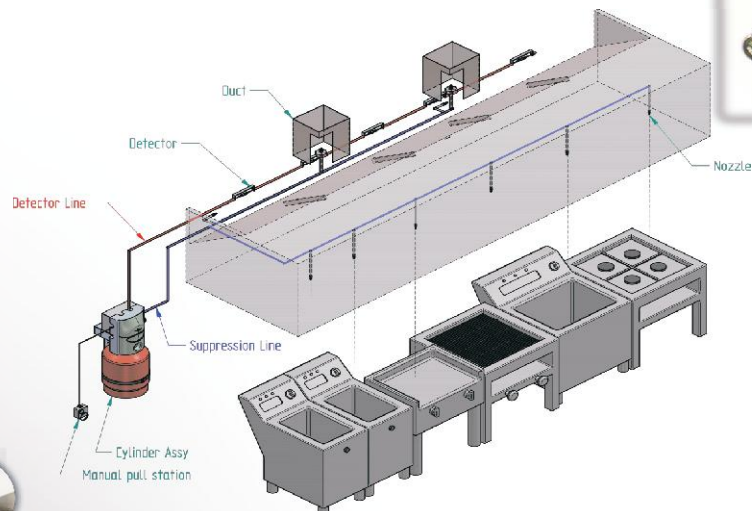
## Manual pull station



Each lehavot WCK system is equipped with at least one manual pull station providing a means of activating the system manually if required

Automatic Fire Detection & Suppression system that was designed for kitchen-hoods in public restaurants, Hotels, Hospitals and more. Lehavot's systems is installed in more than 10,000 locations around the world. The system is

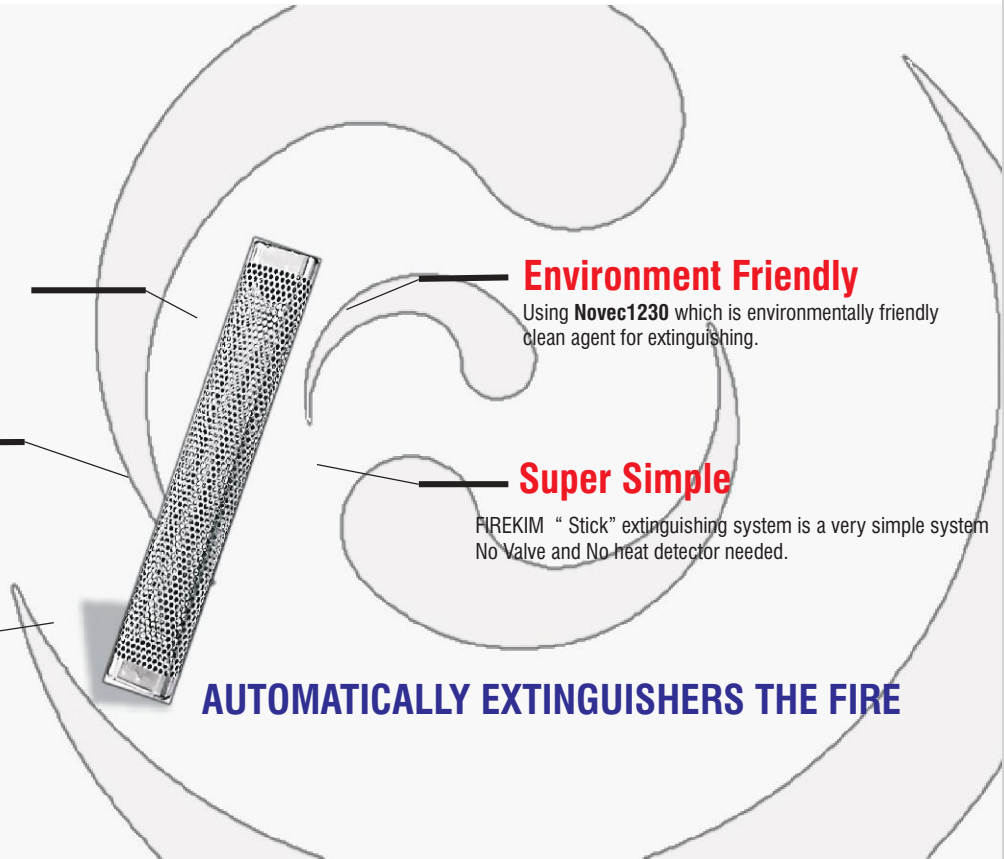
- UL - 300 listed
- CE
- NFPA 17A NFPA36





**FIRST TIME IN INDIA**

# FIRE STICK



### No Power Supply

No power, No Human to operate, No Maintenance needed.

### Very Light

Very easy to handle & install

### Environment Friendly

Using **Novec1230** which is environmentally friendly clean agent for extinguishing.

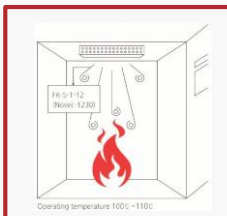
### Super Simple

FIREKIM "Stick" extinguishing system is a very simple system No Valve and No heat detector needed.

### Fast Extinguishment

Quick Action

**AUTOMATICALLY EXTINGUISHES THE FIRE**



**Operating Temp.**  
105-(221.9)

Operating temperature 100-110c

### Installation



Peel off the sticker  
\*Bracket available

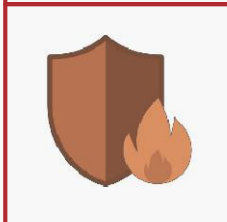


Attach the product  
to a flat surface

## Easy installation



**Cooling**



**smothering**

Design the protection volume	Specification	The maximum height for installation	Shelf live
0.12m <sup>3</sup>	15mmx25mmx130mm	0.8m	5 years
0.20m <sup>3</sup>	15mmx25mmx200mm	1.5m	
0.25m <sup>3</sup>	15mmx25mmx250mm	1.2m	
0.36m <sup>3</sup>	15mmx25mmx300mm	1.2m	

\*\* It is possible to customize according to buyer's requirements. \*\* Customizing is Available.

# INTIME FIRE APPLIANCES PVT. LTD.

### Registered Office

21-A, Ghanshyam Indi. Estate,  
Off Veera Desai Road, Andheri (West),  
Mumbai - 400 053. India.  
Tel. : +91-22-2673 1828 / 2673 1852  
Fax : +91 22-2673 1828

### Corporate Office

301, 3rd Floor, Times Squire Building,  
Above Blum Showroom, Western Express  
Highway, Near to Sia Service,  
Andheri (East), Mumbai - 400 069.  
Tel.: 022-4918 0900.

### Work

D-24/6 TTC Industrial  
Area, MIDC, Turbhe,  
Navi Mumbai - 400 705, India.

[orders@intimefire.com](mailto:orders@intimefire.com)

[ho@intimefire.com](mailto:ho@intimefire.com)

Website: [www.intimefire.com](http://www.intimefire.com)